

RIGHT FROM THE START



# Complete your space

EVERYTHING YOU NEED FOR YOUR SPACE, INSIDE AND OUT

**WILLSCOT**

TM

SPACE SOLUTIONS | 800.782.1500 | [WILLSCOT.COM](http://WILLSCOT.COM)





# One call and you're ready to work

With other providers, when you order an office trailer, that's what you get — an empty trailer. Then it becomes your job to fill it up. Not so with WillScot. We provide the space, plus everything else you need to make it functional right away.

- Working with one source for everything saves valuable time and money.
- We handle ordering, delivery, setup and return, so you can stay focused on your project.
- Eliminate startup headaches by having one consistent offering and one bill. Make one call to us and suddenly you have a lot less to worry about.



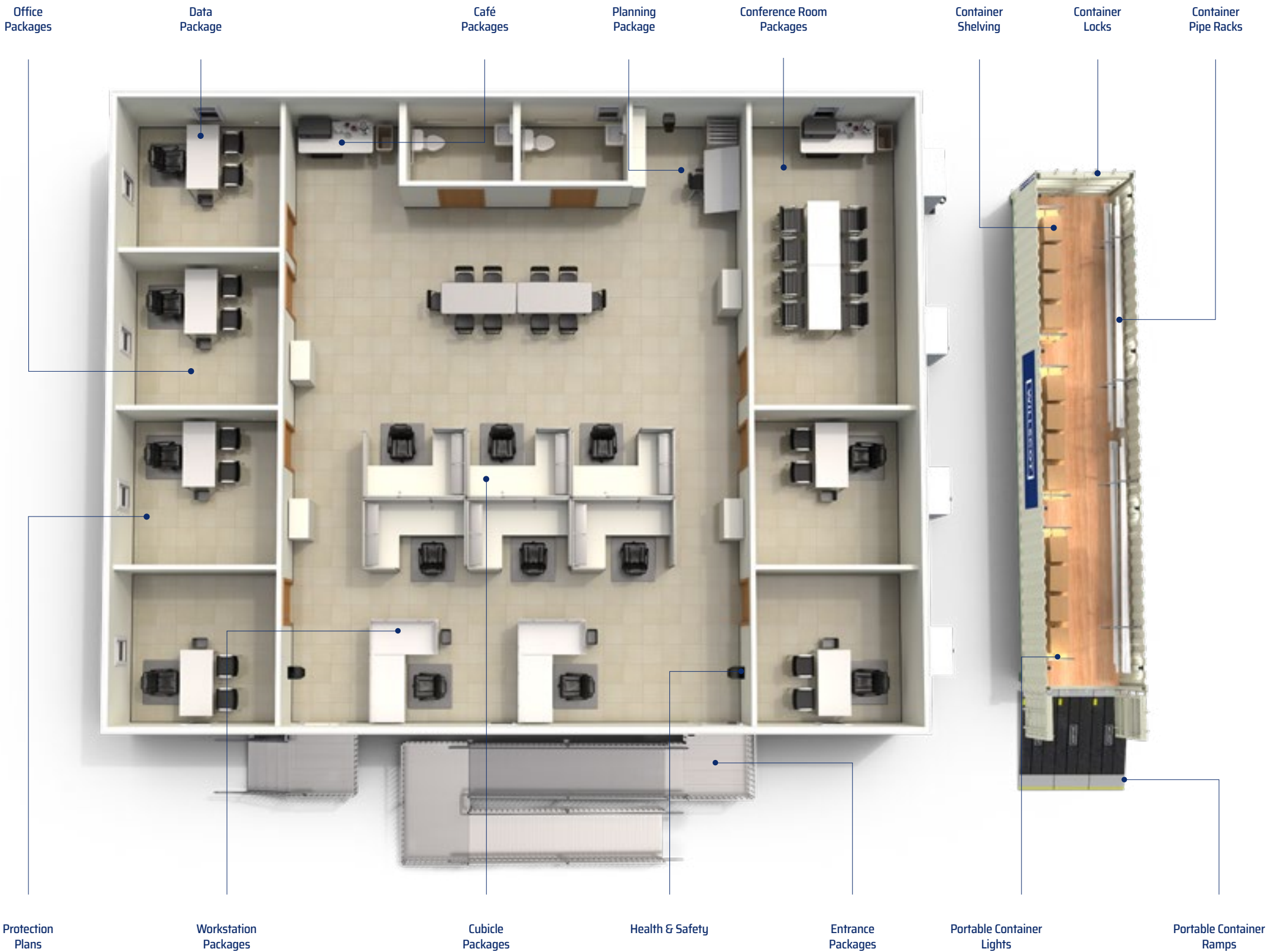
# EVERY DETAIL, HANDLED

WillScot is the leader in modular workspace solutions. We know temporary space like no other company, and our experts know how to best configure it to meet any need and budget.

We offer a breadth of ready-to-go packages that cover the most typical needs. Plus we provide these packages at multiple levels, from simple, quality furnishings that accommodate your construction teams, to more premium options suitable for entertaining customers and VIPs.

We also offer a full range of items à la carte to finish out your space. You need it? Chances are we've got it.

CONTENTS	
Office Packages	7
Conference Room Packages	10
Workstation Packages	15
Cubicle Packages	18
Health & Safety Packages	23
Café Packages	28
Planning Package	33
Media Package	35
Lunch Room Packages	37
Entrance Packages	40
Data Package	45
Portable Storage Units	49
Insurance & Waivers Package	61
À La Carte Items	66





# Office Packages

Whether you need a big open-concept workspace or something more private, we can help you create the ideal work environment. Our package levels are designed to fit any need or budget.



PACKAGE LEVELS

	BASIC	PROFESSIONAL	PREMIUM
Standard Desk	1x	1x	
Manager's Chair	1x	1x	
Small White Board	1x	2x	1x
Floor Chair Mat	1x	1x	1x
Small Office Trash Can	1x	1x	1x
Over Door Coat Hook	1x	1x	1x
Premium Office Chair		1x	1x
Stackable Side Chair		2x	2x
3 Drawer Pedestal File Cabinet		1x	2x
Office Supply Starter Kit		1x	1x
Premium "L" Desk			1x



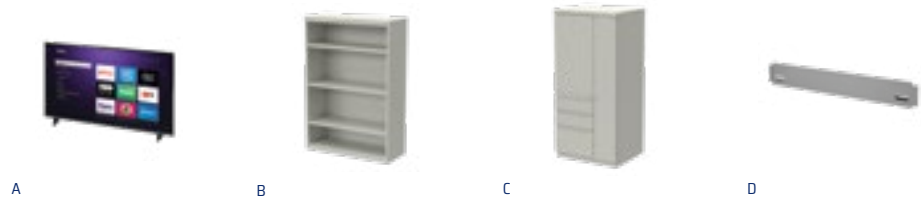
Premium Office



Professional Office



Basic Office



- RECOMMENDED ADD-ONS**
- A.** 50" Flat Screen (pg. 50)
  - B.** 4 High Bookcase (pg. 48)
  - C.** Wardrobe/Cupboard Tower (pg. 48)
  - D.** Modesty Panels\* (pg. 46)

\*Modesty panels provide privacy below the desk.



# Conference Room Packages

WillScot makes it easy for you to create a larger meeting room where your teams can convene and collaborate. Our packages come with everything you need to be productive, from a kitchen space to scalable table options for any sized group.





PACKAGE LEVELS

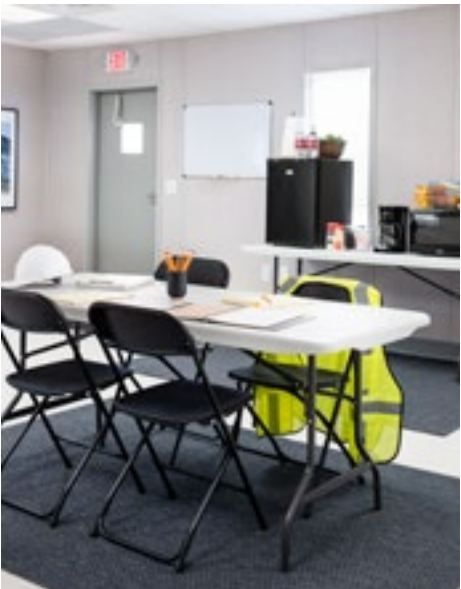
	BASIC	PROFESSIONAL	PREMIUM
Folding Table	2x		
Folding Chair	4x		
Mini Refrigerator	1x		
Coffee Pot	1x	1x	1x
Microwave	1x	1x	1x
Large White Board	1x	1x	1x
Large Trash Can	1x	1x	1x
Convenience Starter Kit	1x	1x	1x
Standard Desk / Table		2x	
Conference Table			2x
Cafe Table		1x	1x
Manager's Chair		8x	12x
Full Size Refrigerator		1x	1x
Keurig			1x



Premium Conference Room



Professional Conference Room



Basic Conference Room



RECOMMENDED ADD-ONS

- A. 50" Flat Screen (pg.50)
- B. 4 Drawer Lateral File Cabinet (pg. 48)
- C. Extra Folding Chairs (pg.47)
- D. Extra Manager's Chairs (pg.47)





# Workstation Packages

Create an open working environment that encourages collaboration, while also giving your people the personal space they need to do their jobs. Our packages are built to provide privacy, comfort and tidy cable management.



PACKAGE LEVELS

	BASIC	PROFESSIONAL
Standard Desk / Table	1x	
Manager's Chair	1x	1x
Floor Chair Mat	1x	1x
3 Drawer Pedestal File Cabinet	1x	1x
Small Office Trash Can	1x	1x
Surge Protector	1x	1x
Privacy Shields Around Desk	1x	1x
Modesty Panels Around Desk	1x	1x
Office Supply Starter Kit		1x
Premium "L" Desk		1x



Professional Workstation with additional 3 Drawer Pedestal File Cabinet



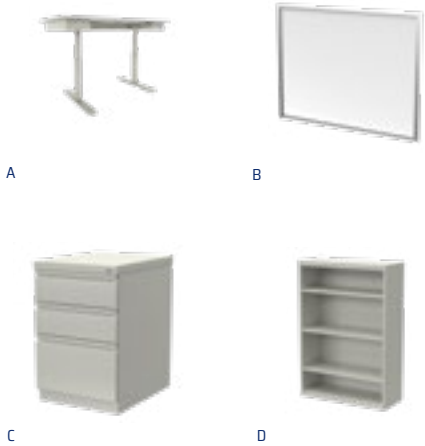
Basic Workstation



Modesty and Privacy Panels

RECOMMENDED ADD-ONS

- A. Electronic Standing Desk (p. 64)
- B. Small White Board (p. 68)
- C. 3 Drawer Pedestal File Cabinet (p. 66)
- D. 4 High Bookcase (p. 66)





# Cubicle Packages

Provide workspace privacy in any configuration with our flexible and scalable cubicle packages. Our unique panel system allows fast, tool-free assembly, accommodates power and data supply, and complements modern WillScot furniture.





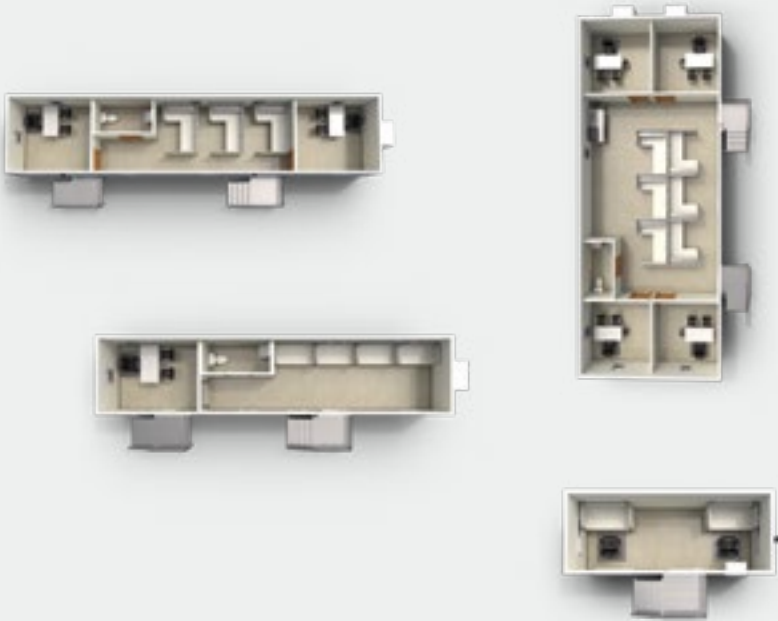
PACKAGE LEVELS

	BASIC	PROFESSIONAL
Desk	1x	
Manager's Chair	1x	1x
Pedestal File Cabinet	1x	2x
Small Office Trash Can	1x	1x
Floor Mat	1x	1x
Cubicle Panels	3x	5x
"L" Desk		1x
5 ft Open Shelf		1x



Endless configurations  
for whatever  
you may need

Our unique panel system allows fast, tool-free assembly, accommodates power and data supply, and complements modern WillScot furniture.



A versatile solution  
that completes any space

- Clean, modern aesthetic
- Sound dampening panels with tackable walls
- Power and data options available
- Fast, tool-free assembly



A



B



C



D

RECOMMENDED ADD-ONS

- A. 3 Drawer Pedestal File Cabinet
- B. Power/data pole
- C. 5 ft. Open Shelf
- D. Manager's chair





## Health & Safety Packages

Keep your people safe, your workspace operational and your company compliant with mandates for sanitation and social distancing. Our line of purifying and protective Essentials has you covered.



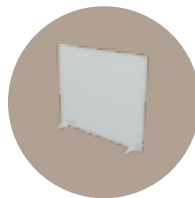
# BREATHE A LITTLE EASIER WITH OUR INDUSTRY LEADING LINE OF PROTECTIVE PRODUCTS



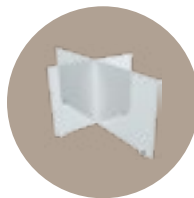
Extended privacy shields help to divide the space while still allowing light to pass through.



Portable air purification system removes harmful particles throughout your space.



Free standing acrylic protective barriers are a flexible and mobile way to reduce the potential spread of infection.



Conference table protective screens help to keep your meeting space safe and productive.



## Acrylic dividers for every area of your space

- Host safe and productive meetings
- Use freestanding shields for temperature check stations
- Taller privacy shields give your employees peace of mind and keep the space open and bright

# OUR LINE OF PURIFYING AND PROTECTIVE ESSENTIALS HAS YOU COVERED

## PORTABLE AIR PURIFICATION SYSTEM



This revolutionary product incorporates patented DFS technology to efficiently reduces airborne microorganisms and particulate matter.

- WELL and UL2998 Certified
- Capable of 99.99% removal of particles as small as 0.007 micron
- Lightweight, compact, portable construction
- Used in healthcare, government buildings, and military settings.
- Inhibits microorganism growth to extend filter life

## ELECTRONIC STANDING DESK



A must-have as your body's needs change throughout the day. The simple up/down controller with memory presets allows you to effortlessly move from seated to standing, and back again.

- Digital keypad w/ three programmable memory settings
- Quiet dual motor design
- 250 lb capacity
- Anti-collision gyro sensor
- 30" x 60" desktop
- ADA & ANSI/BIFMA compliant

## FREE STANDING PROTECTIVE BARRIER



Acrylic protective screens are clear, highly transparent and able to withstand repeated cleaning. They are the ideal choice for applications that require durable, washable see-through material for health, reception and safety screens.

- Fits any counter space
- Acrylic durability and superior transparency
- 30.5" W x 23.5" H

## EXTENDED PRIVACY SHIELDS



Our extended privacy shields offer privacy and protection from airborne transmission. The panels are frosted allowing light into the workspace. Multiple configurations are available to meet any need.

- Fits WS desks
- Frosted finish
- Added privacy

\*Individual particle sizes and specific particle size ranges may have different filtration efficiency rates.



PORTABLE AIR PURIFICATION SYSTEM

INTELLIPURE ULTRAFINE 468

Patented “DFS” Technology delivers advanced air purification with a system specifically designed to capture and reduce ultrafine particles in the air. This revolutionary technology efficiently reduces airborne microorganisms and particulate matter while prolonging filter life by inhibiting the growth of captured microorganisms.

- Efficient air purification to remove VOCs and particles in the indoor environment
- Capable of 99.99% aggregate removal of particles down to 0.007 micron\*
- Incorporates patented DFS technology, currently utilized in hospitals, medical clean rooms, government buildings, and military applications



SPECIFICATIONS

- Efficient purification for large spaces
- Weight: 27 lbs
- Dimensions: 13.4” L x 10.6” W x 30.0” H
- Material: All metal housing
- Color: Black

TOTAL SYSTEM PERFORMANCE

- High quality EC motor for low operating costs
- High CFM rate (300 CFM) with low energy consumption
- High CFM rate per decibel level
- Multiple fan speeds for maximum filtration and acoustical control
- Lightweight, compact, portable construction
- Designed for quick, easy filter maintenance and replacement

AREA	CEILING HEIGHT	AIR EXCHANGE	TURBO SETTING	CFM
1125 sq ft	8’	2 hrs	59.2 dB(a)	300
700 sq ft	8’	2 hrs	59.2 dB(a)	300
350 sq ft	8’	2 hrs	59.2 dB(a)	300

\*Individual particle sizes and specific particle size ranges may have different filtration efficiency rates.

ELECTRONIC STANDING DESK

A must-have as your body’s needs change throughout the day. The simple up/down controller with memory presets allows you to effortlessly move from seated to standing, and back again.

DID YOU KNOW?

Over 60% of employers provide ergonomic standing desks to their employees.

ERGO MADE EASY

Easily upgrade your standard desk to a standing desk in any of our office, workstation, or cubicle packages.

ADA & ANSI/BIFMA compliant



DIGITAL UP/DOWN KEYPAD WITH THREE PROGRAMMABLE MEMORY SETTINGS

30" X 60" WORK SURFACE

Matches seamlessly with full Essentials furniture lineup

27.5" - 44.5" HEIGHT RANGE

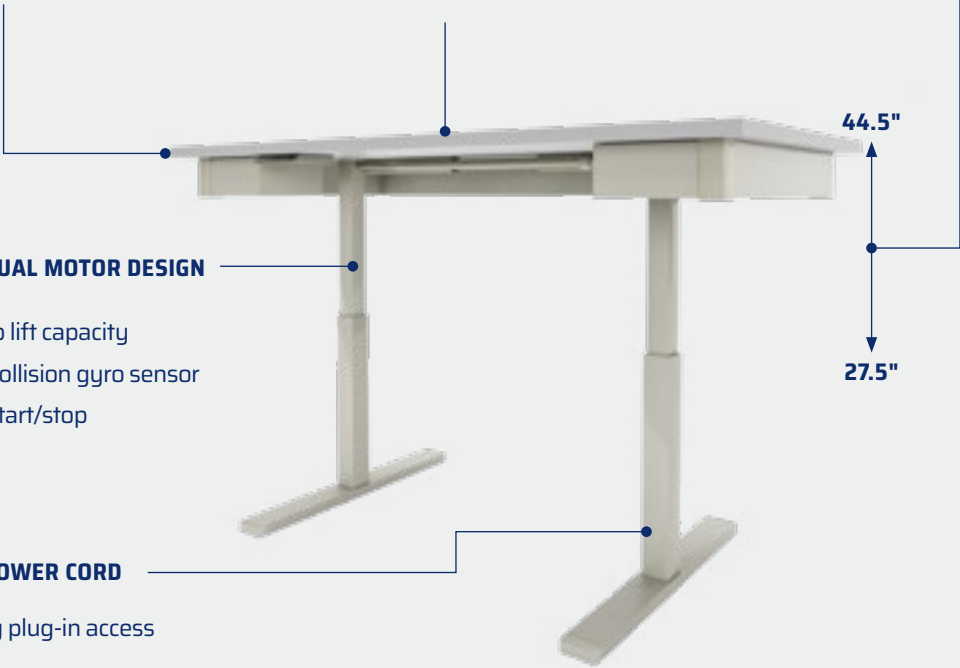
For the ideal sit and stand preferences

QUIET DUAL MOTOR DESIGN

- 250 lb lift capacity
- Anti-collision gyro sensor
- Soft start/stop

-9 FT. POWER CORD

For easy plug-in access





# Café Packages

Part of building worksite productivity is making it easy for your people to take a quick break. Our packages allow you to provide a well-outfitted space to grab a coffee, keep snacks cool, and warm up lunch.





PACKAGE LEVELS

	BASIC	PROFESSIONAL
Folding Table	1x	
Mini Refrigerator	1x	
Coffee Pots	1x	1x
Microwave	1x	1x
Convenience Starter Kit	1x	1x
Large Trash Can	1x	1x
Café Table		1x
Full Size Refrigerator		1x
Keurig		1x



RECOMMENDED ADD-ONS

- A. Vented Lockers (p. 66)
- B. Wardrobe / Cupboard Tower (p. 66)
- C. Folding Chairs (p. 65)
- D. Manager's Chairs (p. 65)





# Planning Package

Handling and adjusting large blueprints and other project planning documents can be a challenge at the jobsite. Our package gives you the furnishings and storage space you need to be organized and productive.

## PACKAGE LEVELS

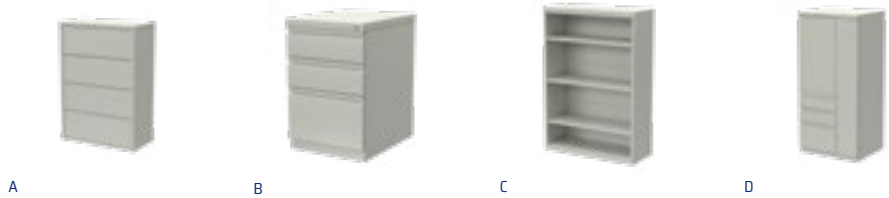
	PLANNING
Drafting Table	1x
Rolling Blueprint Rack	1x
Drafting Stool	1x



Adjustable drafting stool swivels 360°



Oversized drafting table provides extra workspace to accommodate larger documents



### RECOMMENDED ADD-ONS

- A. 4 Drawer Lateral File Cabinet (p. 66)
- B. 3 Drawer Pedestal File Cabinet (p. 66)
- C. 4 High Bookcase
- D. Wardrobe /Cupboard Tower (p. 66)



# Media Package

A necessity for modern-day meeting spaces, and ideal for pure entertainment purposes, our media package means you're Ready To Work (or stream) from day one.

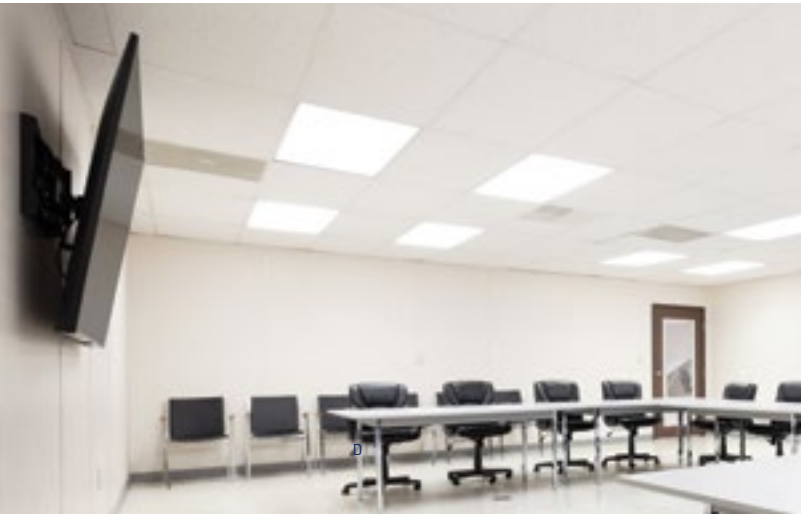
## PACKAGE LEVELS

MEDIA PACKAGE - WALL-MOUNT	
50" Smart TV (other sizes available upon request)	1x
HDMI Cable	1x
Tilting TV Wall Bracket	1x



### Plug and Play

Installed by our crews and ready to go on day one, you avoid costly wall damages and the hassles associated with self-installation.



- BIG SCREEN VISIBILITY  
& BIG HASSLE SAVINGS**
- A. Smart TV (p.68)
  - B. HDMI Cable (p. 68)
  - C. Media Package - Wall Mount





## Lunch Room Packages

A well-appointed lunch area finishes out your workspace and promotes morale and teamwork like no other feature. Our packages provide tables and seating, as well as refrigerator, microwave, and coffee station so your people can refuel, refresh and refocus before going back to work.



PACKAGE LEVELS

	BASIC	PROFESSIONAL
Folding Table	2x	4x
Folding Chair	10x	20x
Large Trash Can	1x	2x
3 Drawer Pedestal File Cabinet		1x
Folding Café Table		1x
Large White Board		1x
Full Size Refrigerator		1x
Coffee Pot		1x
Microwave		2x

Convenience Starter Kit

2x



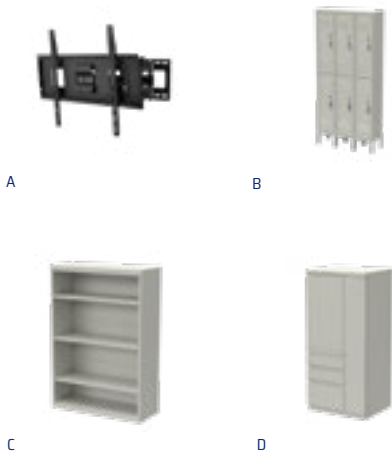
Basic Lunch Room



Professional Lunch Room

RECOMMENDED ADD-ONS

- A. Media Package - Wall Mount (p. 68)
- B. Vented Lockers (p. 66)
- C. 4 High Bookcase (p. 66)
- D. Wardrobe /Cupboard Tower (p. 66)





# Entrance Packages

When your mobile office arrives, make sure your people can get into it right away. Our OSHA-compliant packages provide safe, solid, high-grip walking surfaces that you can depend on in any weather, including adjustable steps and treaded platform.





PACKAGE LEVELS

	BASIC	PROFESSIONAL
Stair System	1x	1x
Platform	1x	1x
Boot Scraper	1x	1x
Entrance Mat	1x	1x
Canopy System		1x



Everything we offer is OSHA compliant and set up completely onsite by WillScot.



We have a full range of ADA/IBC compliant step and ramp solutions to meet the needs of your site.

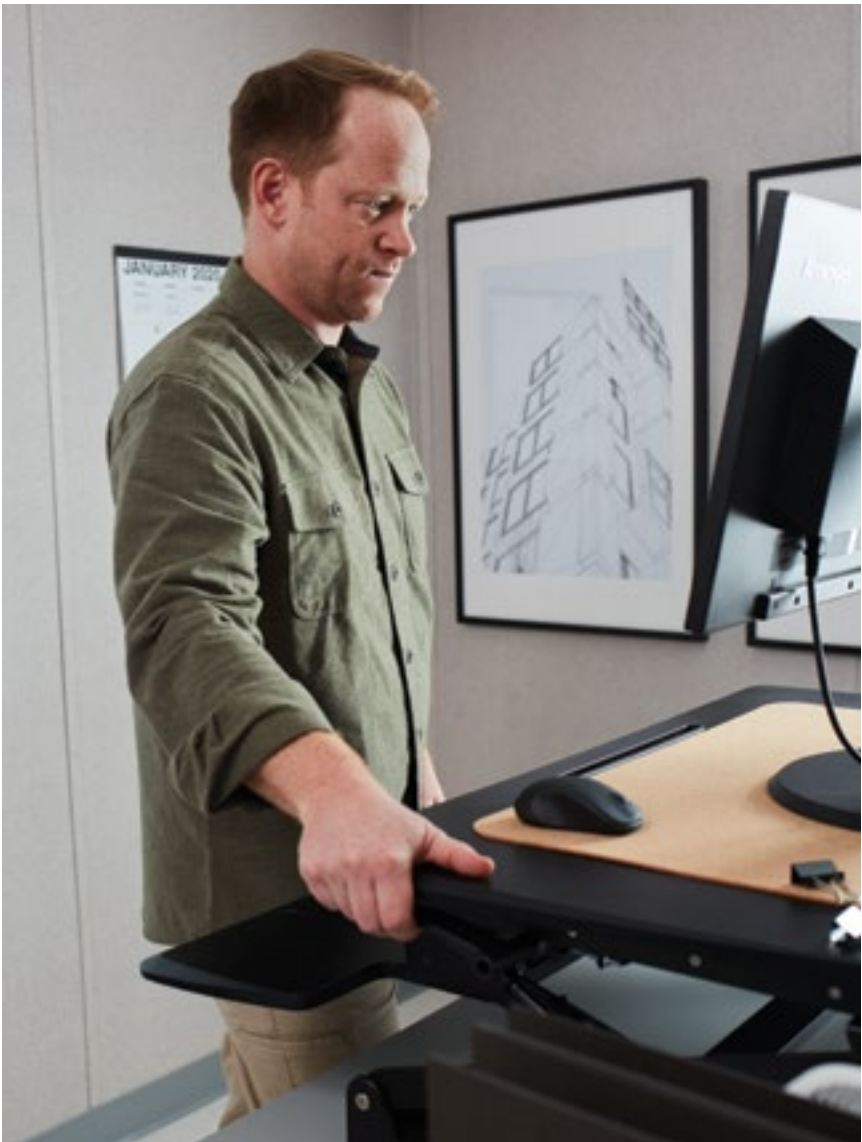
An entrance mat and boot scraper ensures the office stays clean.



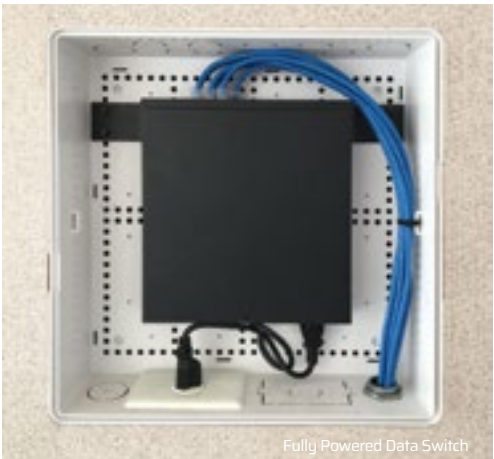


# Data Hub

Wiring your workspace yourself can cost thousands, create delays and damage the unit. Choosing to have your unit pre-wired saves you money, time and hassle.



Ethernet Port



Fully Powered Data Switch

## RECOMMENDED ADD-ONS

- A. Smart TV (p. 68)
- B. HDMI Cable (p. 68)
- C. Surge Protector (p. 70)
- D. Media Package - Wall Mount (p. 68)



A



B



C



D









## Eliminate downtime by getting your unit wired before delivery

- VoIP-supported data ports in every office and common area
- Single external hook up point for your ISP gets you online faster
- Port placements are fully customizable to your needs



# SAVE TIME, MONEY AND A WHOLE LOT OF HASSLE

Wiring your workspace yourself can cost thousands, create delays and cause damage. One call to WillScot and you can get modular space that's wired up and ready for business.

	TIME	INSTALLATION	DAMAGE	COST
CALL WILLSCOT	 Unit arrives ready	 Simple ISP hookup	 No Drilling, no damage	 \$100 per month
VS				
DO IT YOURSELF	 2+ weeks to install	 Added time/install for ISP hookup	 Modifications incur damage cost	 ≈\$2,000 cost per floor

# A BETTER WAY IN EVERY WAY

### EVERYONE’S PRODUCTIVE IMMEDIATELY

Your people can get on the internet and get right to work, and you can focus on more important things than managing a wire-up.

### COSTS ARE CONTROLLED

We’re much less expensive than hiring a wiring vendor. There’s no damage billing on return. And your own people don’t have to mess with it.

### EVERYTHING WORKS

We pre-test every port, so your unit arrives ready to rock. And if a switch fails, we replace it free. No maintenance, no worries on your part.

### YOUR ISP HOOKUP IS PLUG AND PLAY

ISP access points are pre-fitted and ready to be connected on day one. If you have multiple floors, a single demark point can be connected to make your entire space live.



## Multiple Port Placements in Every Office and Common Area

- Predetermined port placements are one less thing to think about and ensures you have access where you need it
- Powered data ports fully support VoIP functionality
- Single external ISP hookup point gets you online faster

### WHAT’S INCLUDED?

- Min. 6 VoIP capable ports per trailer/unit
- A powered Ethernet switch
- 15" wall enclosure
- Demarcation box for ISP hookup on unit exterior
- All installation and testing of components





# Portable Storage Units

Get the portable storage and accessories you need to keep your operation organized and efficient. From various sizes and door configurations to security options, Mobile Mini provides reliable solutions to all your portable storage needs. Add locks, pipe racks, shelf brackets, lights and more to save precious time and money.



# CONFIGURATIONS TO MEET EVERY NEED

Patented Tri-Cam Locking System for vault like security and easy one-handed open access



STANDARD STORAGE CONTAINERS

EXTRA-WIDE STORAGE CONTAINERS

SPECIALTY STORAGE CONTAINERS



Standard width storage containers are ideal for keeping valuable materials, inventory and equipment safe and protected from the elements.

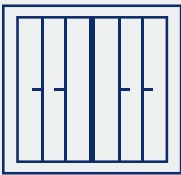


Sometimes two feet of extra width can make an enormous difference. That's why we offer the industry exclusive 10 ft wide storage container. The extra space lets you store pallets side by side with a walkway down the middle for the ultimate in storing convenience.



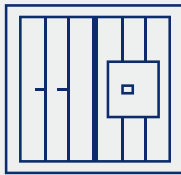
Our specialty storage containers are ready for whatever big job you throw at them. With doors at both ends, access couldn't be easier making your stored items readily available when you need them.

## MULTIPLE DOOR CONFIGURATIONS



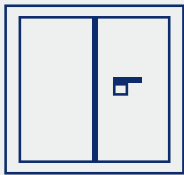
STANDARD DOOR

These are regular doors, which work well for basic storage needs.



TRI-CAM DOOR

Our patented Tri-Cam Locking System provides bank-vault security with interlocking bars for your precious valuables.



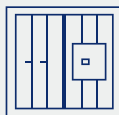
PREMIUM ENTRY

These open easily with one hand so you can get in with minimal effort, especially when you're carrying something.

DOOR OPTIONS



Standard Doors



Tri-Cam Doors



Premium Doors

DOOR OPTIONS

Our premium easy open door comes standard on extra wide storage containers.



Premium Doors

DOOR OPTIONS



Standard Doors



Tri-Cam Doors



Premium Doors



# LOCK OPTIONS

The days of finding, buying and managing your own locks are over. Mobile Mini offers a line of durable locks designed specifically to fit our storage and office units, so you can keep your valuables secure.

BASIC PADLOCK	CONTAINER GUARDLOCK®	ENFORCER LOCK
---------------	----------------------	---------------



Our most simple locking solution. Works great with all of our units and is a reliable choice for any budget.



- Stainless steel body for maximum strength
- Anti-rust, anti-corrosion and weatherproof
- Hardened steel shackle for best cut resistance
- Durable brass locking cylinder
- Can be keyed alike or different

This hardened-steel, drill-resistant device has a hidden six-pin tumbler system to keep intruders out.

- Extra secure locking mechanism for high-value items
- Constructed from super-durable materials
- Stands up to harsh weather and extreme temperature
- Won't degrade in wet, dirty or corrosive environments
- Can be keyed alike or different

Our maximum-security solution keeps the intruders out and your valuables in.

- Cast steel block protects the padlock from physical attack
- Chrome-plated spring steel lock
- Secured around locking rods with an ABLOY padlock included
- Adjusts in half-inch increments
- Portable and easy to install
- Can be keyed alike or different

DOOR COMPATIBILITY	DOOR COMPATIBILITY	DOOR COMPATIBILITY
 Standard Doors	 Tri-Cam Doors	 Premium Doors
 Standard Doors	 Premium Doors	



We don't just think our locks work — we know they do

We tested our locks with every tool, material and break-in tactic out there; they're tamper-resistant, bullet-proof and virtually theft-proof. When you rent with us, you can rest assured that no one is getting into your stuff but you. Period.

Container GuardLock®



# PRORACK™

## Configure Every Inch of Space to Your Needs

Turn your space into exactly what you need with PRORACK: a complete system of sturdy, readily movable surfaces.

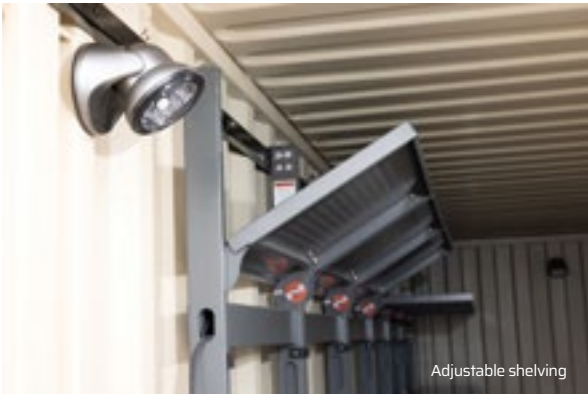
Configure it to function as a desk, material storage, pipe rack, tool rack, or a combination of them all. PRORACK optimizes your space like never before.



Durable shelf capacity

## The Breakthrough Workspace Management System

- 3 tiers of storage with 300lbs of working load capacity per shelf
- Fully collapsible and configurable panels
- 32-degree configurability for pipe rack storage
- Pre-installed and ready to work on delivery
- Pegboard outfitting for tool organization
- BIFMA and ANSI certified



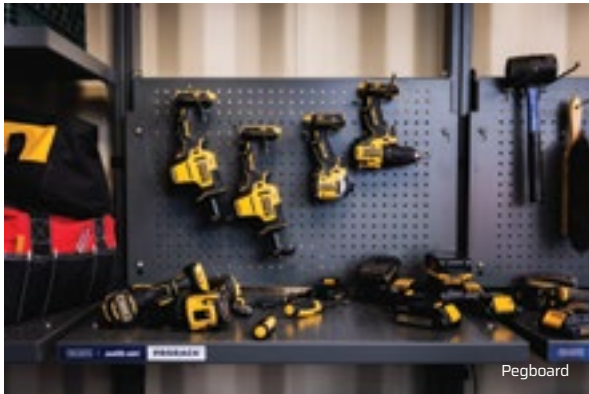
Adjustable shelving



Workstation



Built-in channels to run cords



Pegboard



Pipe rack

## Unleash New Possibilities with Your Space

### ENTIRELY FLEXIBLE WORKSPACE

Set up your PRORACK system exactly how you need it. Then when your needs change, shift and shape it to match.

### QUICK AND EASY SETUP

PRORACK comes pre-installed in your unit, meaning you can spend less time on setup and more time getting the job done.

### ORGANIZE YOUR SPACE

When your space is organized, you can get more done. PRORACK helps you skip the time wasted procuring equipment, because you'll already know where everything is.

### MAXIMIZE YOUR CAPACITY

From 200-pound capacity pegboards to 300-pound-per-shelf capacity on surfaces, PRORACK can handle it all, and meets the highest standards of BIFMA and ANSI certification.



AVAILABLE IN 8 FT, 16 FT, 24 FT, AND 32 FT PACKAGE SIZES\*

Install PRORACK on one or both sides of the storage container.

\*Shelving length may vary slightly



# CONTAINER SHELVING



### HEAVY DUTY CAPACITY

Each bracket supports up to 1,200 lbs — you might need to find more stuff.



### STORAGE FROM FLOOR TO CEILING

Maximize every square inch of your unit with 3 tiers of shelving installed on one or both sides of your container.



### READY TO USE

Shelving arrives fully set-up with wood in place.



### SIZED FOR ANY NEED

Available in 6 ft, 16 ft and 32 ft package sizes for whatever your site demands.



### EASY ACCESS

Use the space underneath to store large items like pallets, ladders and tools.



### PIPE RACKING

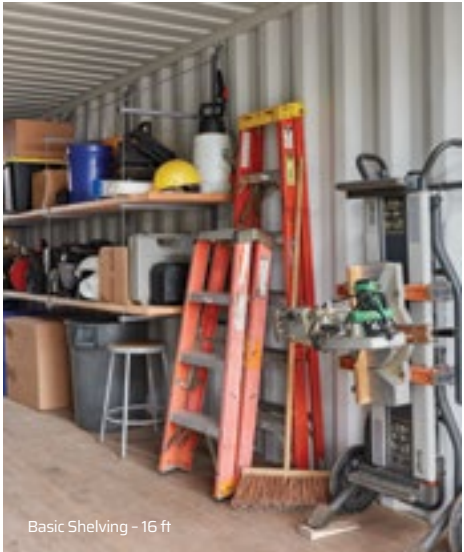
Add as many as you need for pipes and longer materials of any kind.



Basic Shelving - 32 ft



Pipe Racks



Basic Shelving - 16 ft



### RECOMMENDED ADD-ONS

- A. Portable Container Lighting (p. 67)
- B. Enforcer Lock (p. 67)
- C. Protection Plans (p. 58)
- D. Pipe Racks (p. 67)

Available in 6 ft, 16 ft and 32 ft package sizes\*





# PORTABLE CONTAINER LIGHTS



## MOTION SENSING

Save energy by having the lights turn on and off only when needed. The sensor beam is adjustable so you can dial in the functionality you want.



## ULTRA-BRIGHT LED

Each 600-lumen fixture brightly illuminates its surroundings, so your people can clearly see exterior doors and locks and internal workspaces and supplies.



## WEATHERPROOF

With an IP66 dust and water rating, our lights are built to perform through the harshest conditions. Extreme temps, bad weather — the lights stay on.



## MAGNETIC

Place lights anywhere you need them, no fasteners required. The magnetic backing readily adheres to our metal storage and office units.



## BATTERY OPERATED

Cut the cord and experience ultimate mobility with battery power. No other power connection needed. Expected life with new batteries is 6-12 months, depending on use.



## INTERIOR OR EXTERIOR

The same lights can be used inside or out in the elements. They're a quick and easy way to make your whole space bright, secure and functional.



Magnetic



Weatherproof



A



B



C



D

## RECOMMENDED ADD-ONS

- A.** Enforcer Lock (p. 67)
- B.** Shelving Brackets (p. 67)
- C.** Pipe Racks (p. 67)
- D.** Protection Plans (p. 58)



# Protection Plans

We make it easy to get the coverage you need for your rental units. Gain peace of mind and the freedom to focus on other priorities.





# PROTECTION PLANS



# LOSS DAMAGE WAIVER

Waives requirement to cover loss or damage to WillScot-owned units due to vandalism, fire, and acts of God.


FEATURES

Covers up to total replacement cost of WillScot-owned leased unit(s) and Essentials


\$0 deductible

Waives lease requirement to provide proof of property damage insurance

No risk assessment—everyone qualifies




Protection from windstorms and acts of God.



Protection from floods and hurricane damage.




## Benefits of our coverage options (even if you have your own insurance)




**LOW-COST**

- Low monthly cost with \$0 deductibles
- Serves as primary coverage which can act as a stopgap to high deductible plans




**EFFICIENT**

- Easy to enroll with no prequalification needed
- Managed on a single monthly invoice with leased unit(s)
- Eliminates the need to provide proof of insurance



**HASSLE-FREE**

- No need to start/cancel - coverage is effective immediately upon delivery and automatically ends with the lease
- No dealing with missing or expired certificate of insurance fees
- No coordination with multiple agencies needed




**ZERO PENALTIES**


- No premium hikes in the event of a claim
- Protects against cost increases and negative ratings on your existing policy
- Claims do not affect future rental costs or service

### WHAT'S COVERED


Electing the Loss Damage Waiver provides you financial peace of mind by covering up to the total replacement value of WillScot-owned units and Essentials should they be lost or damaged due to:




Fire



Earthquakes



Floods



Hurricanes

### SIMPLE CLAIMS SUBMITAL PROCESS

- To receive coverage under this plan, a claim must be submitted within 24 hours of knowledge of the event
- Report loss under this coverage due to any criminal act to the appropriate law enforcement authority
- Provide all necessary assistance in processing the claim

**Claims Reporting:** Your Local Mobile Mini Branch

Direct all waiver related questions and requests to:

**WillScot Risk Management Team**  
4646 E Van Buren St. Suite 400  
Phoenix, AZ 85008  
(888) 284-0614

[willscot.com](http://willscot.com)  
[RiskManagement@willscot.com](mailto:RiskManagement@willscot.com)

Exclusions: Damages caused by negligence, abuse, wear & tear, or customer modifications. Loss or damage of Lessee property. Damage during transport by Lessee or anyone other than WillScot. Third-party rental services or equipment (e.g. dumpsters, fencing, jiffy-johns, etc.) Other restrictions and limitations may apply - view the addendum at [willscot.com/customer-support/terms-conditions](http://willscot.com/customer-support/terms-conditions).



# GENERAL LIABILITY INSURANCE

Protection for third-party bodily injury and property damage claims.

FEATURES

Substantial coverage limits:

- \$2,000,000 aggregate
- \$1,000,000 per occurrence
- \$5,000 per person medical coverage (non-classroom units)
- \$1,000 per person medical coverage (classroom units)

\$0 deductible; first dollar coverage

Coverage extends to correctly installed entrance packages

“Occurrence Coverage” included – coverage if suit is filed years after lease agreement ends

Waives lease requirement to provide proof of commercial general liability insurance

No risk assessment – everyone qualifies



# CONTENTS INSURANCE

Insurance for your stored contents at four affordable tiers of coverage (available for storage containers only).

COVERAGE OPTIONS		
Tier 1	\$2,000 coverage	\$250 deductible
Tier 2	\$5,000 coverage	\$250 deductible
Tier 3	\$10,000 coverage	\$250 deductible
Tier 4	\$20,000 coverage	\$500 deductible

## ADDITIONAL COVERAGES

- Up to \$500 for removal/disposal of damaged property
- Up to \$100 for replacement lock



Protect valuable items from theft



Protection from forced entry

## WHAT’S COVERED

We’ve partnered with Allen Insurance Group to offer a general liability insurance program which defends you and pays those amounts you are legally obligated to pay due to third-party bodily injury or third-party property damage arising from occupancy and proper use of a WillScot-owned unit.



Delivery Drivers



Clients



Subcontractors



Students

Exclusions: Damages caused by negligence, abuse, wear & tear, or customer modifications. Loss or damage of Lessee property. Damage during transport by Lessee or anyone other than WillScot. Third-party rental services or equipment (e.g. dumpsters, fencing, jiffy-johns, etc.) Other restrictions and limitations may apply – view the addendum at willscot.com/customer-support/terms-conditions.

## SIMPLE CLAIMS SUBMITTAL PROCESS

**24/7 Claims Reporting**  
1-800-922-5536

Direct all insurance related questions and requests to:

**Allen Insurance**  
304 Martin Luther King Drive  
Fort Valley, GA 31030  
1-800-922-5536

allenins.com  
postmaster@allenins.com

## WHAT’S COVERED

We’ve partnered with Storage Protectors to offer an AM Best “A+” rated contents insurance program, providing coverage of the property inside the units you lease from Mobile Mini should they be lost or damaged due to:



Burglary



Water Damage



Fire/Smoke



Falling Objects



Mold/Mildew\*



Rodents/Pests\*

Exclusions: Damage/theft of property not within a fully enclosed and secured unit. Damage due to named storms, floods, or earth movement. Unexplained disappearance. Does not cover various items including firearms, documents, currency, furs, and animals. Not available for third-party managed services or equipment (e.g. dumpsters, fencing, portable toilets, etc.). Other restrictions and limitations apply – view the Addendum and Summary of Coverage documents at MobileMini.com/customer-care/customer-forms.com.

## SIMPLE CLAIMS SUBMITAL PROCESS

- Promptly report any losses under this coverage
- Report loss under this coverage due to any criminal act to the appropriate law enforcement authority
- Provide all necessary assistance in processing the claim

Direct all waiver related questions and requests to:

**Storage Protectors**  
2345 E Thomas Rd, Suite 145  
Phoenix, AZ 85016-7848  
(833) 659-7867

storageprotectors.com  
SP-Questions@carstin.com



# À la carte items

Many of these items are included in our packages, but say you need more desks or chairs or a very specific item to finish out your space. We've got you covered.





DESKS & TABLES



Folding Table

Steel frame with dent, scratch, and rust-resistant surface top. Meets and/or exceeds ANSI/BIFMA performance standards.

72" L x 30" W x 29" H



Standard Desk/Table

Modern design with steel frame and high pressure laminate top for durability. Rear grommet cutout for effective wire management.

60" L x 30" W x 29.5" H



Compact Desk

Smaller size is ideal for space constrained environments. Standard desk offering for FLEX product line.

48" L x 30" W



Premium "L" Desk

Modern design with steel frame and high pressure laminate top for durability. Rear grommet cutout for effective wire management.

90" L x 30" W x 29.5" H



Conference Table

Modern design with steel frame and high pressure laminate top for durability. Center grommet cutout for effective wire management.

72" L x 42" W x 29.5" H



Electronic Standing Desk

Ergonomic sit/stand powered desk with a simple up/down keypad featuring three programmable settings.

60" L x 30" W  
Height Range: 27.5" - 44.5"



Adjustable Student Desk w/Bookbox

Adjustable legs suitable for K-12 schools, universities, and training centers. Unique design allows for a wide array of layout options for individual and collaborative work.

Height Range: 19" - 31"

ACCESSORIES



Privacy Shields

Frosted panels offer privacy while allowing light into the workspace. Multiple configurations to meet any workspace need.

Fit WS desks



Extended Privacy Shields

Frosted panels offer privacy while allowing light into the workspace. Multiple configurations to meet any workspace need.

Sizes: 30" x 30" and 60" x 30"



Modesty Panels

Covers front of desks for added privacy and workspace comfort. Can be installed on any WillScot desk before or after delivery.

Fit WS desks

SEATING



Folding Chair

Metal frame holds up to 400 lbs. Folds closed for compact storage and space flexibility.

38.2" H x 17.5" W x 2.5" D closed



Stackable Side Chair

Stacks up to 12 high. Chrome finish. Wood capped arms in walnut finish.

33" H x 22" W x 20.8" D



Drafting Stool

360° swivel with one-touch seat height adjustment. Foot rest and locking casters. Pictured or similar version provided.

55.3" H x 19.25" W x 29.2" D



Manager's Chair

Lumbar support and waterfall seat cushion. Pneumatic seat adjustment.

40.25" H x 25.25" W x 29.5" D



Premium Office Chair

Modern, black synthetic leather upholstery with chrome arms. Pneumatic seat adjustment with tilt lock. Pictured or similar version provided.

46" H x 26" W x 28.5" D



Student Chair - 18"

Most common size ideal for grade 5 through adult classrooms. Designed for comfort, the chair features a modern flowing shape, double-walled textured shell, and non-marring floor glides.

18" H



STORAGE & SHELVING



3 Drawer Pedestal File Cabinet

Two storage drawers and one file drawer. Four casters with wheel locks.

19.75" D x 15.5" W x 23.75" H



4 High Bookcase

Three heavy-duty shelves adjustable at 1/2" increments. Double wall construction for durability.

51.5" H x 36" W x 14" D



5 ft Open Shelf

For use with WillScot cubicles only, this open shelf is a simple and effective solution to organize books, binders and personal items.

60" W x 13" D



2 Drawer Lateral File Cabinet

Locking casters for mobility and space flexibility. Safety interlock system to allow only one drawer to be open at a time.

29.5" H x 30" W x 18" D



4 Drawer Lateral File Cabinet

Safety interlock system to allow only one drawer to be open at a time. Steel ball-bearing drawers with counterweight to prevent tip over.

51.5" H x 36" W x 18" D



Vented Lockers

Lift-up handle accepts pad locks. Vents for visibility and maximum airflow.

15" W x 18" D (multiple configurations available)



Wardrobe/Cupboard Tower

Double wall construction with adjustable side shelves. Side to side coat rod in main compartment.

51.5" x 24" W x 24" D (multiple configurations available)

PORTABLE STORAGE SHELVING, SECURITY & LIGHTING



Shelving Brackets

Quickly and easily maximize your storage space with these heavy duty steel brackets designed for our storage containers.

2,400 lbs gross weight capacity across two brackets (set), spaced approximately 6 ft apart.



Pipe Racks

Single pipe rack bracket with 4 tiers perfect for storing long and narrow materials. Orders must include 2 brackets.

32" tall. 30 degree arm angle. 2 brackets allow for 2200 lbs of loading capacity.



Container Guard Lock

More than a simple padlock, this optional security device features a hidden six-pin tumbler system and is made from hardened steel. It is virtually drill-resistant to keep your items safe and secure.



Basic Padlock

Our most simple locking solution. Works great with all of our units and is a reliable choice for any budget.



Enforcer Lock

Our maximum-security solution keeps intruders out and your valuables in.



Portable Container Lighting

Outside lighting makes your unit visible and secure. Inside lighting makes the interiors bright, inviting and functional. Mobile Mini makes it all super-easy.

APPLIANCES



Mini Refrigerator

Flat zero clearance back and reversible door to fit in a wide variety of spaces. Mechanical temperature control.

2.5 cubic ft interior



Full Size Refrigerator

Upfront temperature controls, incandescent interior lighting and sealed drawers that keep food fresh longer.

14.6 cubic ft interior



Microwave

Digital interface with 6 automatic cooking menus. Non-stick interior for easy clean-up.

1.1 cubic ft



Coffee Pot

Electric slow drip brewing with auto shutoff feature. Non-stick warmer plate.

12-cup



Keurig

3 cup sizes with 48 oz. reservoir to make up to 8 cups between refilling. Auto shutoff feature turns brewer off after 2 hours of non-use.

13.3" H x 9.5" W x 11.4" D



Air Purifier

Portable air purification system that removes harmful particles throughout your space



COLLABORATIVE



Small White Board

Ideal for offices and tight spaces. Ledge for marker storage.

48" L x 36" H



Large White Board

Perfect for conference rooms and common areas. Ledge for marker storage.

72" L x 48" H



Cork Bulletin Board

Prevents damage from hanging materials directly on walls. Natural cork is durable and great for frequent use. Oak finish.

Multiple sizes available.



Smart TV

1080P screen resolution for stunning HD images. Smart TV with built-in access to streaming services.



Drafting Table

Durable frame with adjustable height and desk angle. Full length pencil catch.

60" W



Rolling Blueprint Rack

Adjustable length and height to accommodate various document sizes. Heavy gauge steel construction holds up to 240 lbs.

46" L x 27" W x 66" H

ENTRANCE



OSHA Steps

Fully OSHA compliant. Durable aluminum construction with built-in treads for secure footing in all weather.

Size varies based on unit.



ADA/IBC Compliant Steps

Fully ADA/IBC compliant and customizable to whatever your site demands. Durable aluminum construction with built-in treads for secure footing in all weather.

Size varies based on unit.



ADA/IBC Compliant Ramps

Straight run or switchback systems available. Durable aluminum construction with built-in treads for secure footing in all weather.

Size varies based on unit.



Canopy System

Can be added to any WillScot step or ramp system. Covers entire entrance platform and is rated for 100 PSF snow load.

Size varies based on unit.

All entrance systems are completely installed onsite by WillScot.

ACCESSORIES



HDMI Cable

30AWG high speed HDMI with Ethernet. Supports 4K video resolutions.



Wall Mount

Designed for 37" - 70" displays and tilts from 0° - 10°. Steel construction supports up to 165 lbs.

33.4" L x 1.9" D x 17.3" H



Blueprint Rack Clamps (6 qty)

Sturdy aluminum with solid steal wing knobs accommodate up to 100 sheets or 20 lbs. Transparent label holders included.

Available in 18" - 42" L



Door Bar

Solid steel bar reinforces entryway and helps protect against intruders. Helps limit access points in larger units.

Size varies base on unit.



Security Screen

Helps protect window from direct impacts. Prevents unwanted entry through unit windows.

Size varies based on window.



ACCESSORIES



Surge Protector

Complete 3-line AC protection. 14 gauge heavy-duty cord.

6 outlets



Floor Chair Mat

Durable plastic protects floors and improves chair movement. Studded version available for carpet.

48" L x 36" W



Power / Data Pole

These attractive and durable poles effectively distribute power and telecommunications wiring to workstations below and can be customized to the needs of your space.

Height varies. 2.5" D



Small Office Trash Can

Convenient size for offices and workstations.

28 qt.



Large Trash Can

Perfect for lunch rooms and common areas. Heavy-duty plastic withstands jobsite abuse.

23 gal.



Small Cubicle Panel

Tackable, sound dampening panel for use with the WillScot cubicle system. Cannot be added as stand-alone item.

30" W x 60" H



Over Door Coat Hook

Ball tips on double steel hook prevent damage to garments. Fits doors up to 1-3/4" thick and holds up to 10 lbs.

8.5" H x 1.5" W x 4.2" D



Boot Scraper

Heavy-duty brush cleans mud, dirt, snow, gravel, rock, leaves, grass, sand, and other debris from all types of footwear. Removes caked-on messes from boot and shoe soles and uppers, saving floors and carpets from debris.

9.4" L x 4.7" W x 4.5" H



Large Cubicle Panel

Tackable, sound dampening panel for use with the WillScot cubicle system. Cannot be added as stand-alone item.

60" W x 60" H



Entrance Mat

GreenTrax high-low scraping design guards against dirt. Durable material withstands harsh weather.

48" L x 36" W



Office Supply Starter Kit

Includes: pens (6), notepads (6), dry-erase marker kit, desk calendar, sticky-notes.

Included in all Professional and Premium Office packages.



Convenience Starter Kit

Includes: ground coffee, filters, stirrers, creamer, sweetener.

Included in all Conference and Café packages.







Get our  
packages and  
get right to  
work



Office Packages

Data Package

Café Packages

Planning Package

Conference Room Packages

Container Shelving

Container Locks

Container Pipe Racks

Protection Plans

Workstation Packages

Cubicle Packages

Health & Safety

Entrance Packages

Portable Container Lights

Portable Container Ramps

Everything you  
need for your space,  
inside and out.

#### COMPLETE YOUR SPACE

We offer a breadth of ready-to-go packages that cover the most typical needs. Plus we provide these packages at multiple levels, from simple, quality products that accommodate your construction teams, to more premium options suitable for entertaining customers and VIPs.

**WILLSCOT**

TM

SPACE SOLUTIONS | 800.782.1500 | WILLSCOT.COM